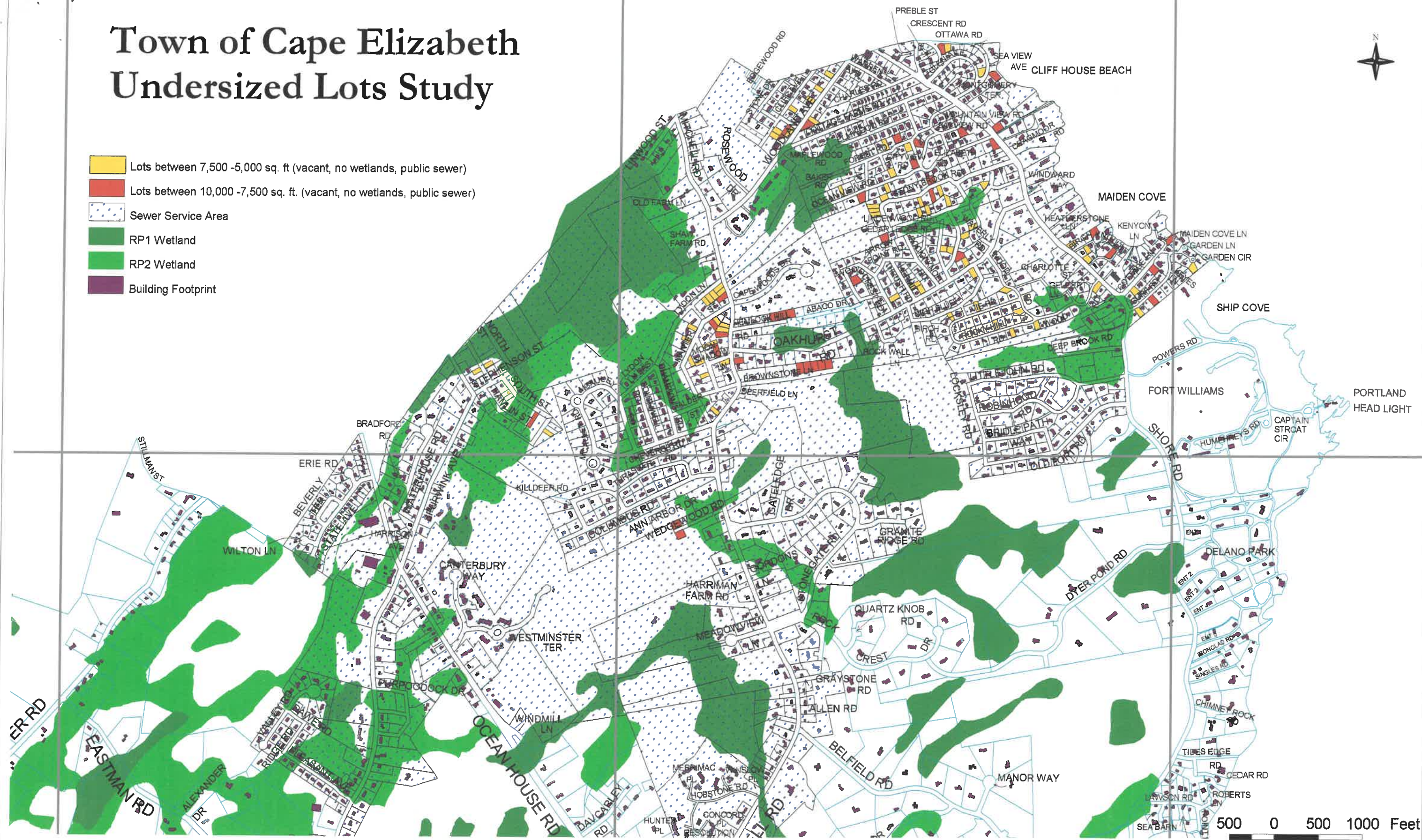


# Town of Cape Elizabeth Undersized Lots Study

- Lots between 7,500 -5,000 sq. ft. (vacant, no wetlands, public sewer)
- Lots between 10,000 -7,500 sq. ft. (vacant, no wetlands, public sewer)
- Sewer Service Area
- RP1 Wetland
- RP2 Wetland
- Building Footprint

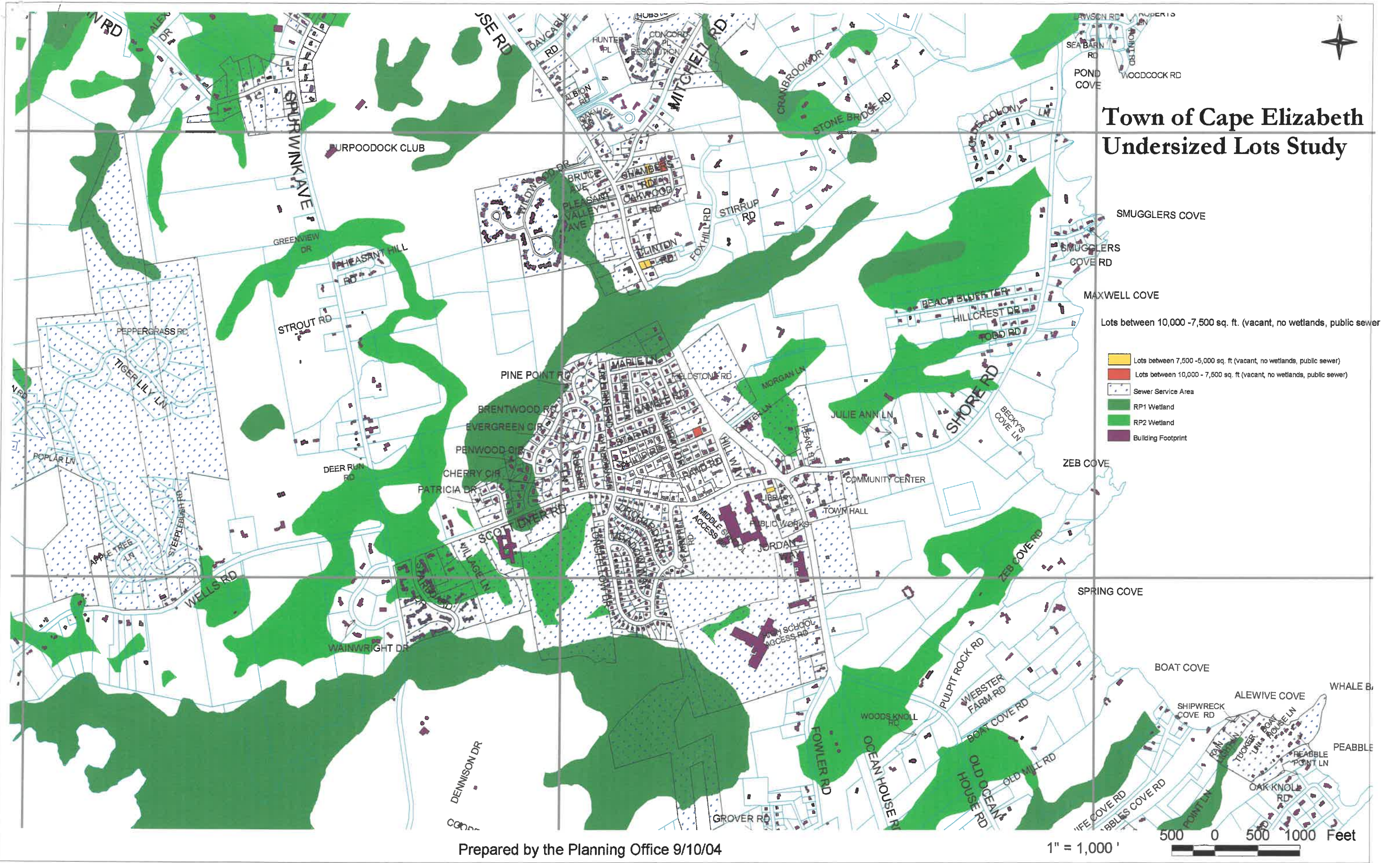


Prepared by the Planning Office 9/10/04





# Town of Cape Elizabeth Undersized Lots Study



- Lots between 7,500 - 10,000 sq. ft. (vacant, no wetlands, public sewer)
- Lots between 10,000 - 15,000 sq. ft. (vacant, no wetlands, public sewer)
- Sewer Service Area
- RP1 Wetland
- RP2 Wetland
- Building Footprint

Prepared by the Planning Office 9/10/04

1" = 1,000'  
500 0 500 1000 Feet